

LOW VOLTAGE LIMITER

PDLVLb500



FEATURES

- Designed for Outdoor Applications
- Low Residual Voltage
- Robust Terminations
- Tested to meet the requirements of BS EN50123 : 2003:
- Railway Applications
- Fixed Installations
- DC Switchgear Part 5

Characteristics:

Dimensions see Drawing

NESEHE/120706/ARR3P/03

Rated Voltage Ur 500VDC

Maximum Leakage Current 50uA

8/20µs Current Impulse 20 x 7.5kA

4/10µs Current Impulse 2 x 100kA

Termination Points M16 stud and M8 clearance.

Mass 0.5kg maximum

PD Devices Ltd. offer a range of Low Voltage Limiter devices primarily designed for DC Traction Systems. As a means of reducing electro-chemical corrosion effects that would result from the earthing of rails, where possible, direct earthing is not used. This can lead to a significant increase in potentials on metallic infrastructure. The key function of the Low Voltage Limiter is as a means of reducing the 'touch voltages' which can exist during correct system operation, but which are also of greater concern during 'fault' conditions that may result from fallen overhead cabling for example.



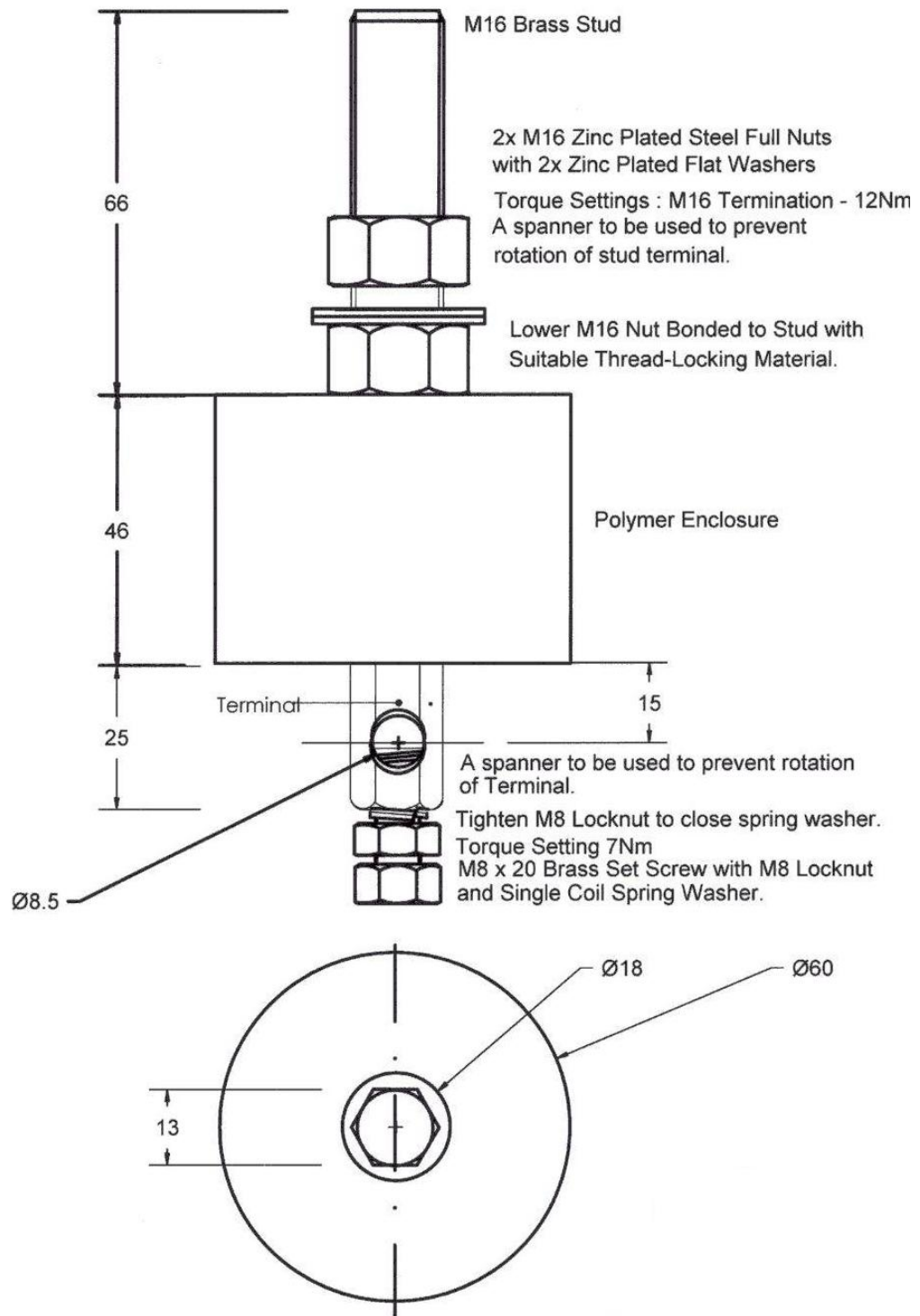
No: GB05/66964

enquiries@pddevices.co.uk

www.pddevices.co.uk

+44 (0)1364 649248

Drawing NESEHE/120706/ARR3P/03



Contacts

**PD Devices Ltd
Old Station Yard,
South Brent,
Devon,
TQ10 9AL, UK.**

**Telephone : +44 01364 649248
Facsimile : +44 01364 649250
E-mail Enquiries : enquiries@pddevices.co.uk
Web Site : www.pddevices.co.uk**

enquiries@pddevices.co.uk

www.pddevices.co.uk

+44 (0)1364 649248