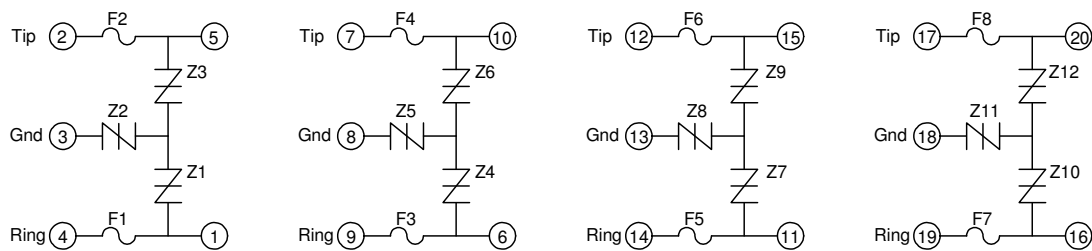


Four Port Balanced Surge Protector (RoHS)

A hybrid Single In-Line Package (SIP) to protect four twisted pairs from overcurrent and overvoltage conditions. Designed primarily for line cards, the protector offers bi-directional transient voltage protection. The package has been manufactured in accordance with the RoHS Directive and is guaranteed lead free.



Electrical Parameters

Peak Off-State Voltage (V_{DRM})	270 V* (Tip – Gnd, Ring - Gnd)
Switching Voltage (V_S)	350 V (Tip – Gnd, Ring - Gnd)
On-State Voltage (V_T)	8 V max
Leakage Current (I_{DRM})	5 μ A
Switching Current (I_S)	800 mA max
Holding Current (I_H)	150 mA min
Off-State Capacitance (C_O) (Pins 1 - 3)	30 pF
Current Rating	1.25 A

Repetitive Surge Ratings

Peak Pulse Current I_{pp} , 2/10 μ s	250 A
Peak Pulse Current I_{pp} , 8/20 μ s	250 A
Peak Pulse Current I_{pp} , 10/160 μ s	150 A
Peak Pulse Current I_{pp} , 10/560 μ s	100 A
Peak Pulse Current I_{pp} , 10/1000 μ s	80 A
Rate of Rise of Current di/dt	500A/ μ s max

All electrical parameters and surge ratings apply to forward and reverse polarities.

*Measured at I_{DRM} .

I_{PP} is a repetitive surge rating and is guaranteed for the life of the product.