



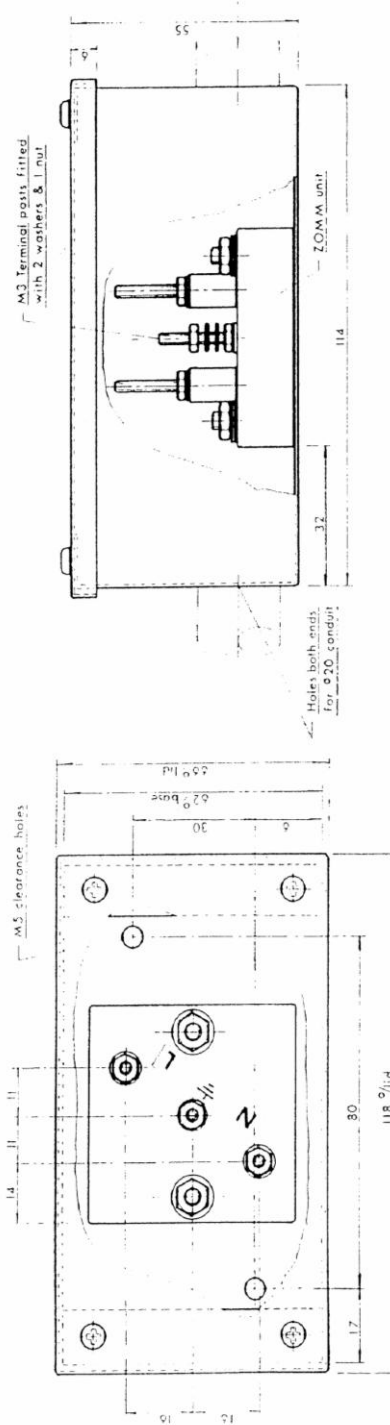
ZOMM SERIES ZOMM 237 / (XXX) / 1 / 2

(XXX)	404	310	410
Continuous Operating Voltage : a.c. (rms)	110	250	250
Energy per channel (Joules) (10/1000 μ s)	65	80	140
Max. Peak Clamping Volts at 100A (8/20 μ s)	300	710	700

Characteristics:

No. of channels	2 (marked L and N, with central earth terminal)
50 Shot (4/20 μ s) Repetitive Duty	600A (Ref . 310) 1000A (Ref . 404 and 410)
Response Time	<10ns
Continuous Current per Channel	N/A
Max. (8/20 μ s) Current per Channel	4500A (Ref . 310) 6500A (Ref . 404 and 410)
Leakage Current per Channel at Rated Voltage, d.c.	<50 μ A
Terminations	3mm Brass
Bushes	PTFE
Earth Connection	To Base Plate
Recommended Torque per M8 Terminal	1.0Nm (Ensure terminal does not rotate)

ZOMM 237 / (XXX) / 1 / 2



Contacts

PD Devices Ltd
enquiries@pddevices.co.uk

Telephone : +44 01364 649248
www.pddevices.co.uk +44 (0)1364 649248

**Old Station Yard,
South Brent,
Devon,
TQ10 9AL, UK.**

**Facsimile : +44 01364 649250
E-mail Enquiries : enquiries@pddevices.co.uk
Web Site : www.pddevices.co.uk**